



2022

22

# ANNUAL REPORT



# MISSION

## OUR MISSION

TO PROVIDE HOPE BY SERVING AND SUPPORTING THE UNDERREACHED COMMUNITY OF PEOPLE WITH PHYSICAL AND NEUROLOGICAL DISABILITIES BY OFFERING PROGRAMS TO IMPROVE THE QUALITY OF LIFE.

# MISSION



# TESTIMONIALS

"I rarely left home except for doctor's appointments after leaving the hospital. An Able Faith movie event was the first time I really went out of the house after my injury, and it gave me the confidence to get back out in the world again."



"We came across Able Faith in a Facebook post and reached out for any sense of hope and purpose, and they came to our rescue. They brought us a respite meal. We had conversations with someone who cared and even joined a bible study. Connections mean so much when you've gone from being the life of the party to being isolated for so long."

"Our savings are depleted, and our disability income only leaves room for the necessities. The workouts for spinal cord injury patients are essential and extremely expensive, and we're so grateful Able Faith exists to provide resources and trainers to fill in the gap."

"I can't express how much Able Faith has helped my son and me get through the last few years. One year Able Faith volunteers sent handwritten Christmas cards, and I still look at the Christmas card on my mantle from Steve and Becky Wells whenever I need an extra dose of encouragement."



Able Faith provides **PURPOSE, COMMUNITY, and SUPPORT** for families and individuals impacted by neurological disabilities.

Community was one of the gifts I was blessed with before and after my injury. My family and I didn't know what to expect, but community and support were exactly what we needed.

We started Able Faith Faith to ensure others also benefited from community, a place to gather, and highly skilled special conditions specialists to support them in their journey to improved mental, physical, emotional, and spiritual strength.

The opportunity to work with an incredible team at Able Faith and support others on their journey humbles me and reminds me that we all of gifts and talents. We simply need to create opportunities to use them.

# THANK YOU



*When we started this journey, all we wanted was a place to work out and have community. Who knew that it would translate to programs providing grants, sharing meals, social outings, and small groups. We're blown away by what God is doing at Able Faith as we aim to serve this incredibly important and unserved community.*

*In 2022, Able Faith had a great year and accomplished several incredible milestones. We increased our programs from 64 to 80, opened the Able Faith Center, and began partnering with other organizations and teams to increase our impact. The vast majority of the work to increase the number of programs was done by our dedicated team of volunteers whose tireless efforts have been instrumental in the success of our organization, and we are truly grateful for their support.*

*In addition to more programs, we were able to finish the build-out of the Able Faith Center, which required additional financial support. Thanks to our supporters' generosity, this multi-purpose facility is now complete. It gives us the ability to offer a wide range of services, including activity-based training, caregiver support and resources, small groups, workspaces, and social outings to even more family members and people with disabilities than before. Your support allowed Able Faith to grow from \$104K to 186K and support approximately 20% more people compared to 2021.*

*At Able Faith, we think about Ephesians 3:20 and marvel at what God has done over the last two years. We can't thank you enough for believing in the Able Faith mission and making 2022 a banner year. As we look ahead, the momentum continues to build, the opportunities become even greater, and the need continues to grow. We're excited about the future and passionate about the people we have the privilege to serve. Thank you for your continued support, and we look forward to working with you to help us reach more people in 2023 and beyond.*

*In Awe,*

**Riley Sprowl & Jose Martinez**  
Able Faith Co-Founders

# THANK YOU

**12,000**

People diagnosed with a spinal cord injury annually

**73%**

Report anxiety and depression associated with their injury

**44%**

used up savings as a result of loss of income

## VARIABLE CAREGIVER SUPPORT

Lack of income and low salaries for caregivers makes turnover high

## MINIMAL COMMUNITY SUPPORT AND PUBLIC ENGAGEMENT

Leads to isolation and loneliness

# WHY ABLE FAITH?



“While doctors and medicine may have saved my life, **ABLE FAITH GAVE ME COMMUNITY AGAIN.**”

## Our Highlights

**211**

Participants served

**80**

Total Programs

**1**

6,500 SQ Foot Facility Opened

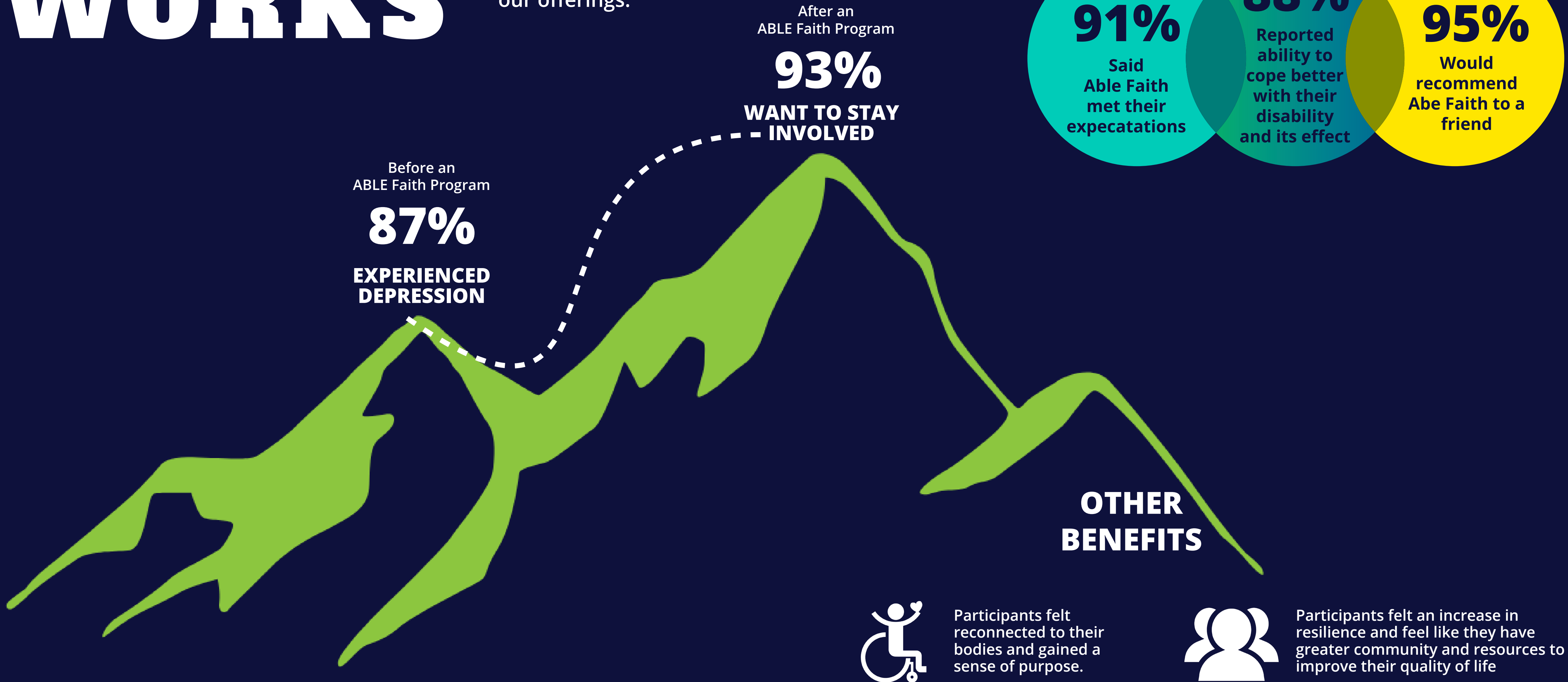
**\$186K**

Funds Raised

# OUR HIGHLIGHTS

# WHY IT WORKS

Able Faith informally surveys program participants to understand Able Faith's impact on their lives. Here's what we've learned. We hope to conduct more quantitative surveys in 2023 and beyond so that we're able to dream big and refine our offerings.





# PROGRAMS

## SOCIAL OUTINGS & COMMUNITY GATHERINGS

Able Faith provided 29 social outings and gatherings designed to facilitate community and engagement with others. Whether 1:1 meals, group lunches, or social outings Able Faith consistently provided opportunities for others to connect.



## RESPIRE DINNERS

Our team provided 43 respite meals to alleviate the burden for caregivers and their families. The meals provided much needed rest for caregivers and time to chat and connect with someone.

## QUALITY OF LIFE GRANTS

\$8K of quality of life grants were distributed to families and individuals in need.

# PROGRAMS



# STRATEGIC PRIORITIES



## EXPAND PROGRAMS

With the launch of the Able Faith Center, Able Faith plans to expand programs to include personal and group training, in-person small groups, and the number of social events.

## INCREASE CAREGIVER CONNECTIONS

Caregivers supporting people with neurological disabilities often experience being overwhelmed without many places to go for information, resources, support, or relief. Able Faith will provide resources and respite care to nurture our caregivers.

## BUILD BASE

Able Faith continues to grow, we have an opportunity further embed ourselves into the community and leverage technology to increase our presence in North Texas, grow our small groups, and coordinate events. We need to engage more to double our current participant base over the next year.

# STRATEGIC PRIORITIES

# 116

Golfers

# 20+

Sponsors

# \$57,000

Raised

Able Faith partnered with multiple individuals and organizations for its 2nd Golf Tournament. During the tournament golfers were able to play, social, and engage with the Able Faith community.

The golf tournament is Able Faith's largest funding raising event and we look forward to the 2023 tournament.

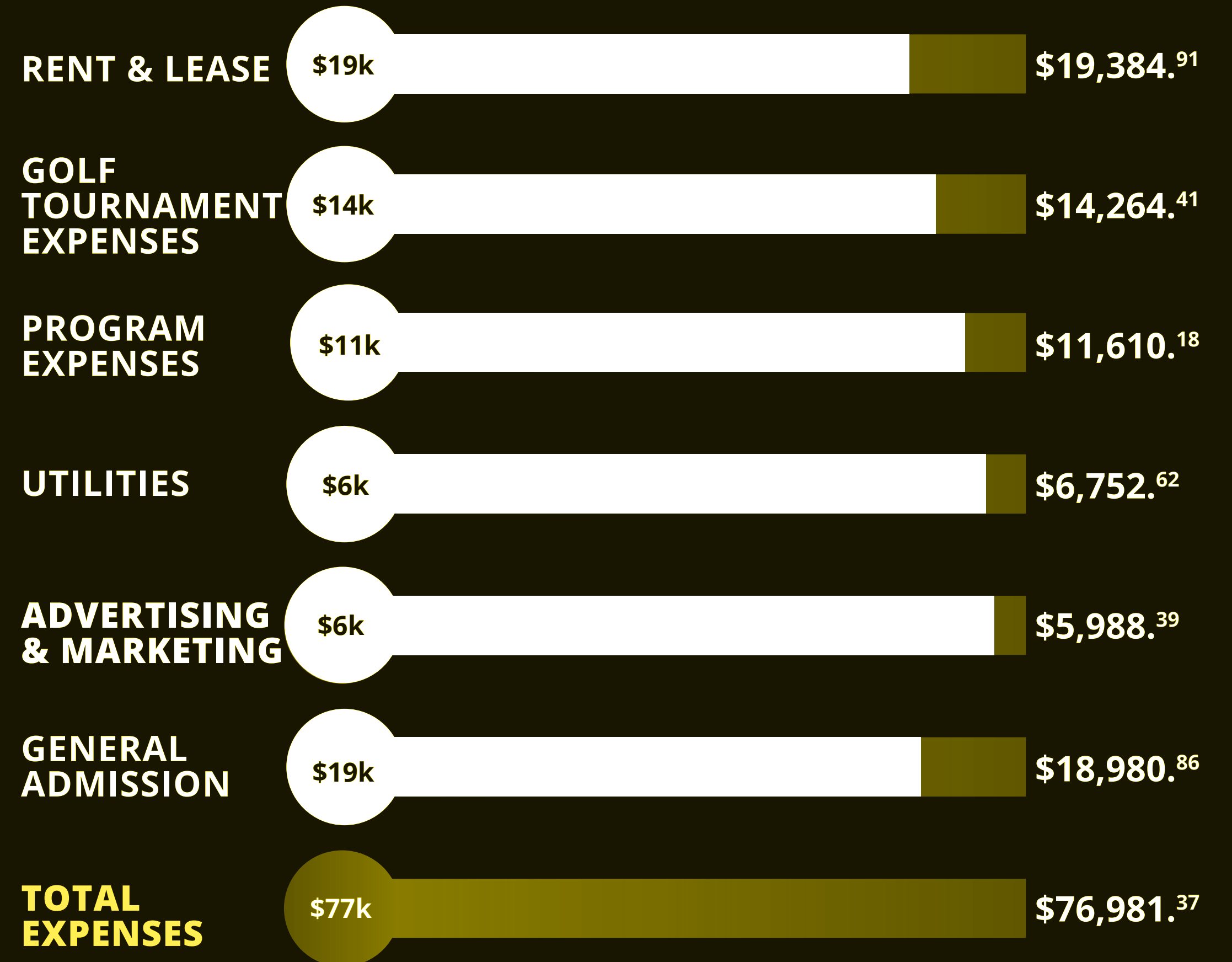


# FINANCIALS

## REVENUE



## EXPENSES



# FINANCIALS



# 2023 EQUIPMENT DREAMS

## **AUTOMATIC DOOR OPENER**

to ensure participants are able to enter the facility without significant burden or support (2 Doors)

---

## **TRANSPORTATION + DRIVER**

to help people get to and from the facility

---

## **SPEAKER SYSTEM**

to improve the environment and energy in the facility

---

## **APPOINTMENT SYSTEM**

to improve the scheduling process  
Volunteer Commitment

---

## **OPERATIONAL FUNDING FOR TWO YEARS**

to ensure consistency

---

## **ADDITIONAL EQUIPMENT**

Barhab Treatment/ High/Lo Tilt Table to provide additional services

---

# 2023 EQUIPMENT DREAMS

# BOARD OF DIRECTORS AND STAFF

RILEY SPROWL  
CO-FOUNDER

JOSE MARTINEZ  
CO-FOUNDER

SHERRI OFFILL  
SECRETARY

CHRIS OFFILL  
TREASURER

BETHANY BROWN

BILL BENTON

BRUCE PATEL

EMILY POWELL

JIM HEMSWORTH

MIKEAL MILLER

REENA PATEL

HAYES ENGHOLM



# STRATEGIC PRIORITIES

In 2023, ABLE Faith will continue to build.

## CARE

Providing high-quality support and resources for people with disabilities, in our community, to meet their basic needs and improve their overall Quality of Life.

## CONNECT

Building a strong community of support, including social and professional networks, to help people with disabilities feel valued and connected to others.

## ADVOCACY

Advocating for the rights and needs of people with disabilities and working to eliminate barriers and discrimination in all areas of life, including educating the general public on the everyday living of people with disabilities.

## TRAINING

Providing training and education to individuals with disabilities, as well as their families and caregivers, to help them achieve their full potential and reach their goals.

## ENCOURAGE

Supporting and encouraging individuals with disabilities to pursue their passions and interests, and to take an active role in their own lives and communities.

## FUNDRAISING

Developing and implementing effective fundraising strategies to secure the necessary resources to support the organization's mission and achieve its goals. This includes building relationships with donors, grantmakers, and other stakeholders, and utilizing various fundraising channels and techniques to generate support.



4350 Sigma Road, Suite 100  
Dallas, TX  
info@ablefaith.org

